

CARABU

AQUACLEAN

CARABU

ALPINE

AQUACLEAN

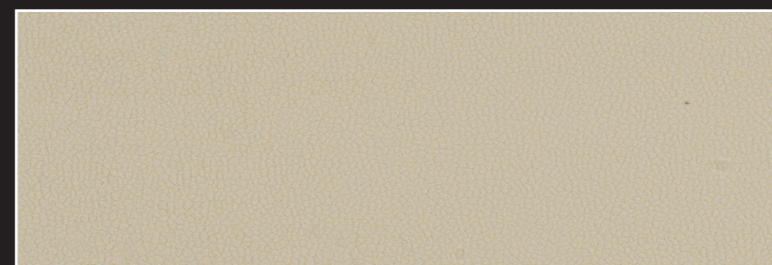
BALTIC

MIRO'

ECTOR



CARABU 102



CARABU 86



ALPINE 22



BALTIC 05



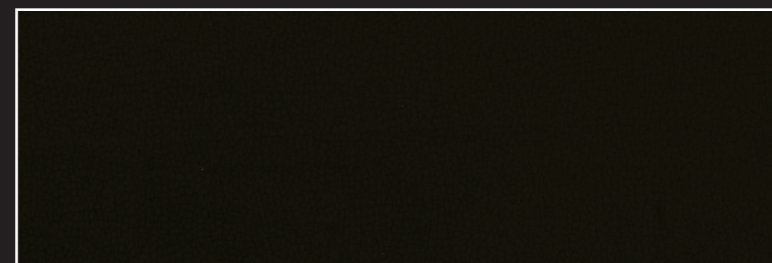
MIRO' 9534



EKTOR 9502



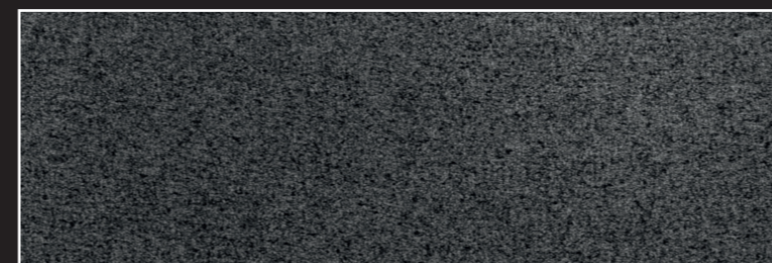
CARABU 76



CARABU 33



ALPINE 21



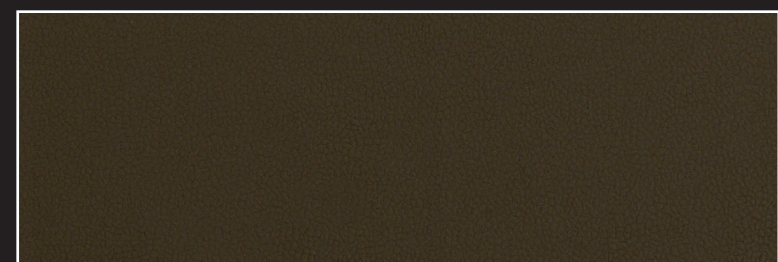
BALTIC 03



MIRO' 9573



EKTOR 9534



CARABU 106



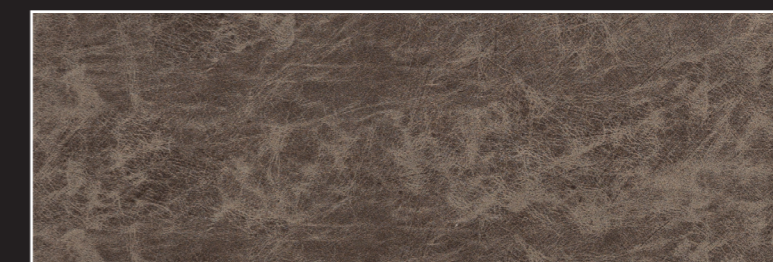
CARABU 80



ALPINE 06



BALTIC 06



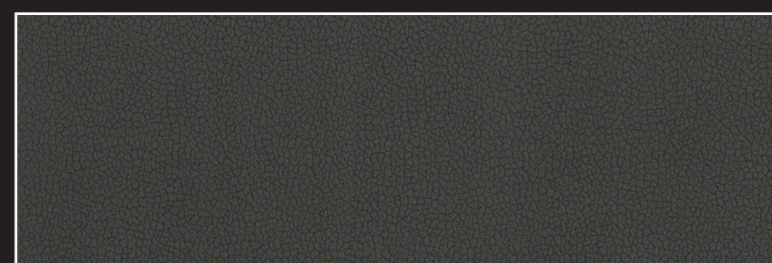
MIRO' 9611



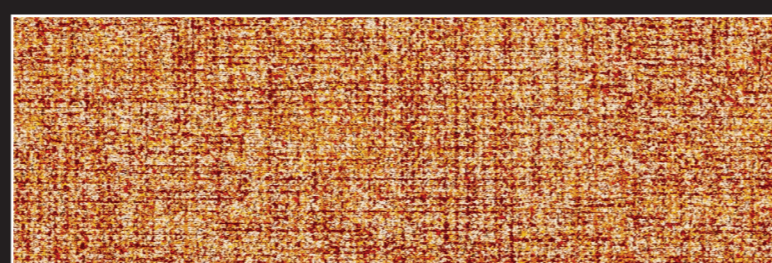
EKTOR 9611



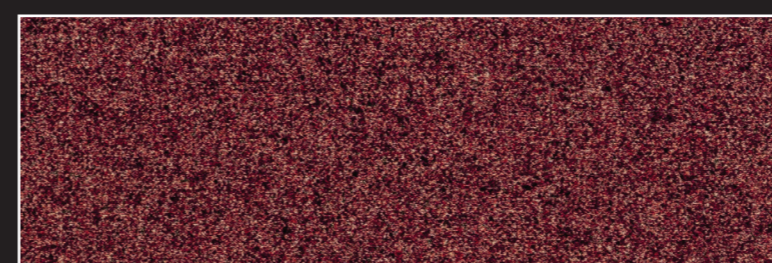
CARABU 87



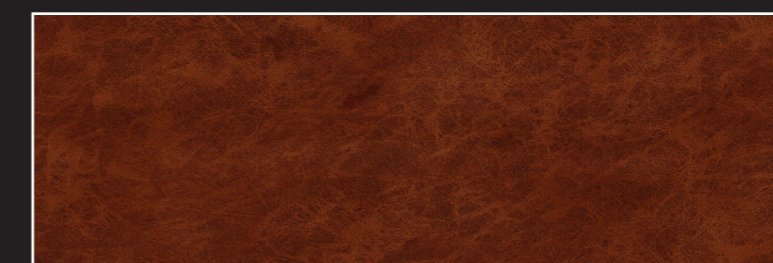
CARABU 77



ALPINE 19



BALTIC 24



MIRO' 9244



EKTOR 9981



CARABU 91



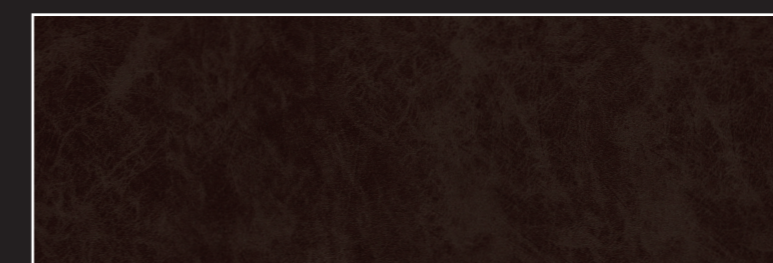
CARABU 72



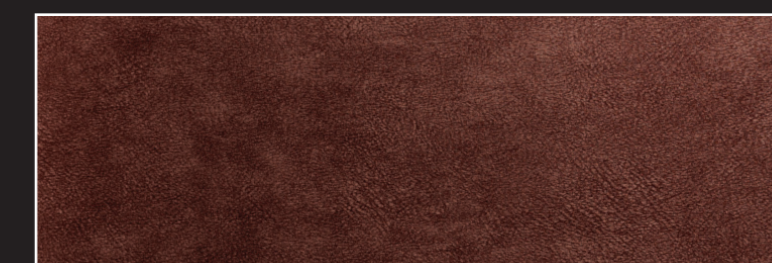
ALPINE 18



BALTIC 18



MIRO' 9190



EKTOR 9132



CARABU 75



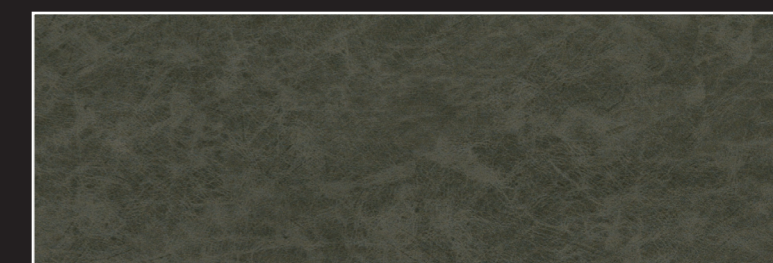
CARABU 132

CARATTERISTICHE TECNICHE TESSUTO

COMPOSIZIONE COMPOSITION	50% PES, 35% ACRIL, 15% PA
PESO (m2) PESO (m2)	410 g/m2
LARGHEZZA WIDTH	140 cm
RESISTENZA ALLA TRAZIONE TENSILE STRENGTH	> 350 N (ISO 13934-1)
RESISTENZA AL PILLING PILLING RESISTANCE	> 4 (ISO DIS 12945-2)

TECHNICAL FEATURES UPHOLSTERY

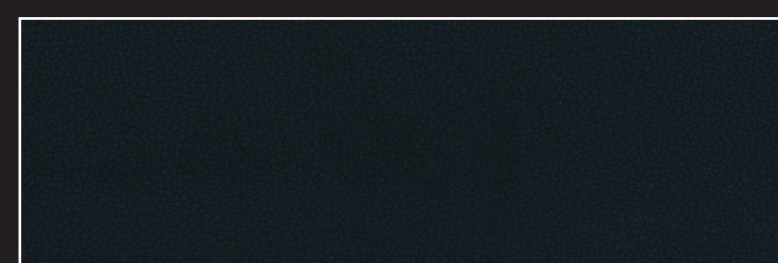
RESISTENZA ALLO STRAPPO TEARING STRENGTH	> 20 N (BS 4303) - > 3 daN (DIN 53859-5)
SCORRIMENTO DELLE CUCITURE SEAM DISPLACEMENT	< 4 mm (BS 3320) - < 6 mm (DIN 53868)
RESISTENZA ALL'ABRASIONE ABRASION RESISTENCE	> 250.000 cicli / cycles (ISO 12947)
SOLIDITA' DEL COLORE ALLO SFREGAMENTO DYE RESISTANCE TO RUBBING	4 buono / good (ISO 105-X12)
SOLIDITA' DEL COLORE ALLA LUCE DYE RESISTANCE TO LIGHT	6 buono / good (ISO 105-B02)



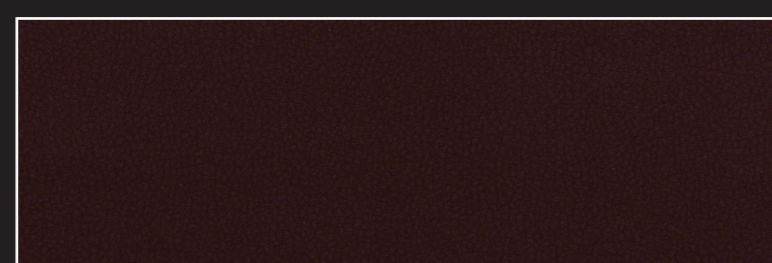
MIRO' 9908



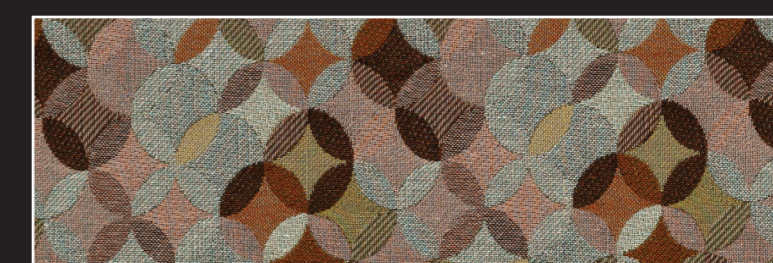
EKTOR 9908



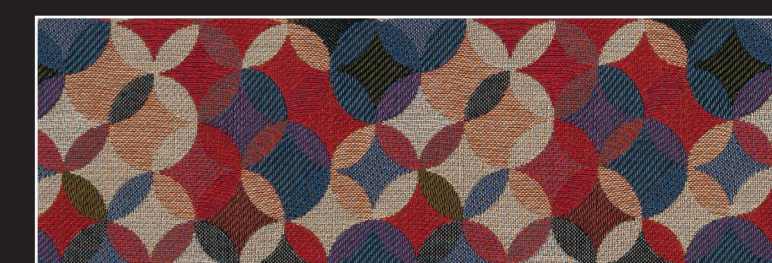
CARABU 109



CARABU 107



ORFEI 25



ORFEI 04