

TESSUTI  
SERIE LUXURY

Love your chairs!



ISTRUZIONI PER IL LAVAGGIO

Le sedute non sono sfoderabili tuttavia prendere visione delle seguenti istruzioni:

- E' possibile lavare in lavatrice usando il ciclo delicato (30°)
- Non centrifugare.
- Non usare candeggina.
- Non asciugare in asciugatrice.
- Non strizzare.
- Non stirare.
- E' possibile lavare a secco



WASHING IINSTRUCTIONS

The seats are not removable, however, take note of the following instructions:

- Machine wash, delicate cycle(max30°C).
- Do not spin dry.
- No bleach.
- Do not dry in tumbler.
- Do not dry in sunlight.
- Do not squeeze or wring.
- Iron inside out.
- Can be dry cleaned

CARATTERISTICHE TECNICHE TESSUTO

COMPOSIZIONE	100% PL
PESO (m2)	448 g/m2
LARGHEZZA	140 cm
RESISTENZA ALLA TRAZIONE	> 496 N ( ISO 13934-1 )
RESISTENZA AL PILLING	> 5 ( ISO DIS 12945-2 )

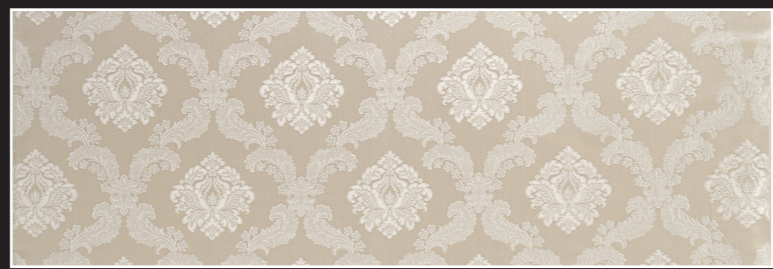
TECHNICAL FEATURES UPHOLSTERY

RESISTENZA ALLO STRAPPO TEARING STRENGTH	> 20 N ( BS 4303 ) - > 3 daN (DIN 53859-5 )
SCORRIMENTO DELLE CUCITURE SEAM DISPLACEMENT	< 4 mm ( BS 3320 ) - < 6 mm (DIN 53868 )
RESISTENZA ALL'ABRAZIONE ABRASION RESISTENCE	> 30.000 cicli / cycles ( BS 5690 / BS2543-1995 )
SOLIDITA' DEL COLORE ALLO SFREGAMENTO DYE RESISTANCE TO RUBBING	4 buono / good (ISO 105-X1 )
SOLIDITA' DEL COLORE ALLA LUCE DYE RESISTANCE TO LIGHT	4 buono / good (ISO 105-B02 )

TESSUTI



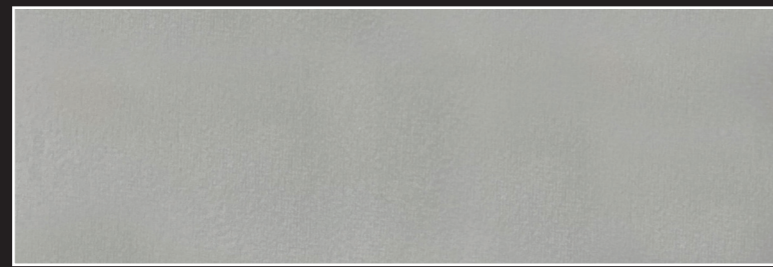
ART. X358 COL. 02



ART. X358 COL. 01



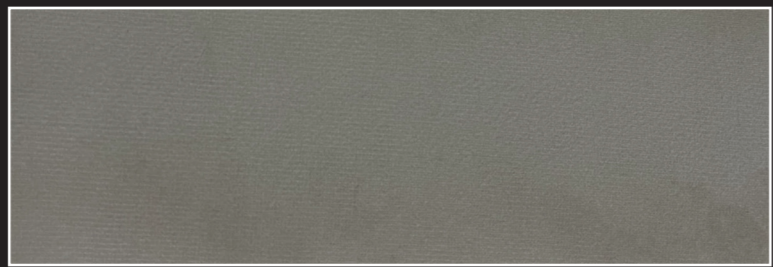
ART. AMSTERDAM COL. 24 IDROREPELENTE



ART. AMSTERDAM COL. 01 IDROREPELENTE



ART. X390 COL. 01



ART. AMSTERDAM COL. 116 IDROREPELENTE



ART. X391 COL. 02



ART. X392 COL. 01



ART. X378 COL. 03



ART. MIRASOL COL. 03

TESSUTI



ART. X378 COL. 04



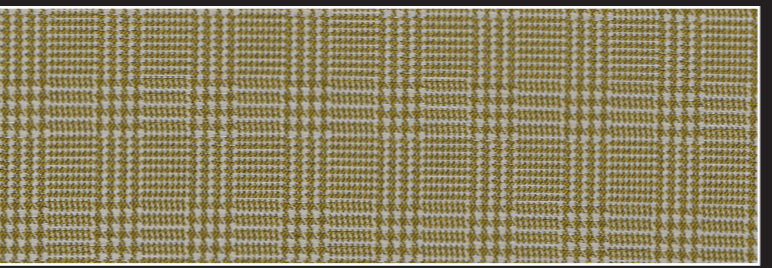
ART. X379 COL. 01



ART. AMSTERDAM COL. 105 IDROREPELENTE



ART. HABANA COL. 27



ART. OLOT COL. 03

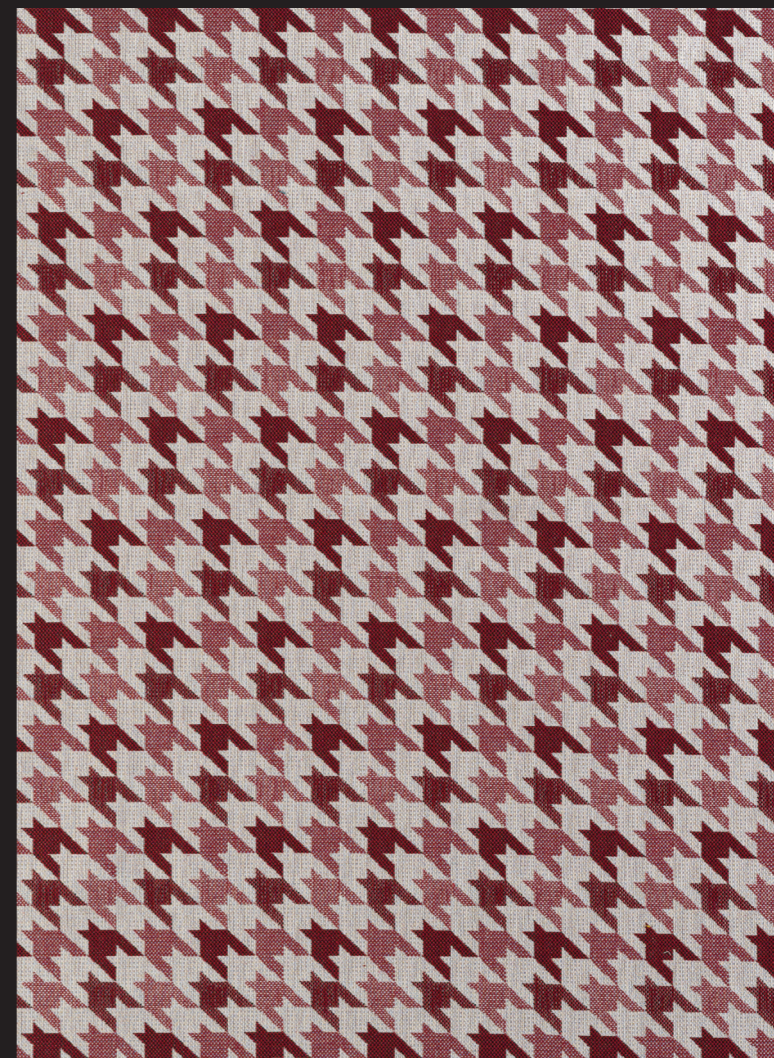


ART. BESORA COL. 03

TESSUTI



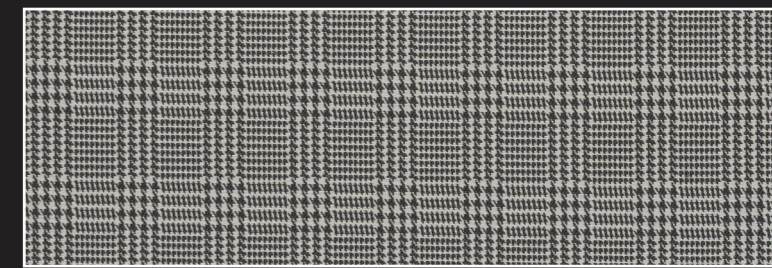
ART. BESORA COL. 11



ART. MIRASOL COL. 04



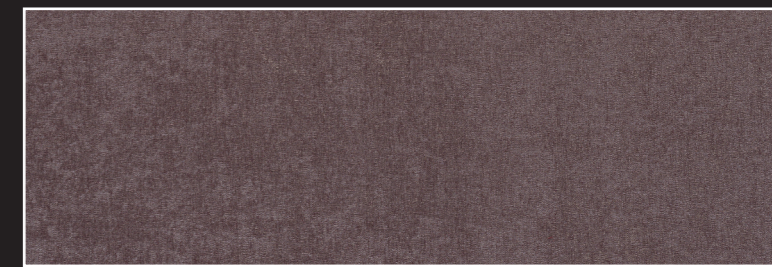
ART. HABANA COL. 26



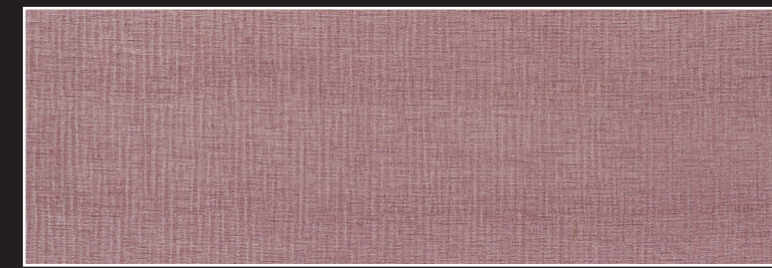
ART. OLOT COL. 12



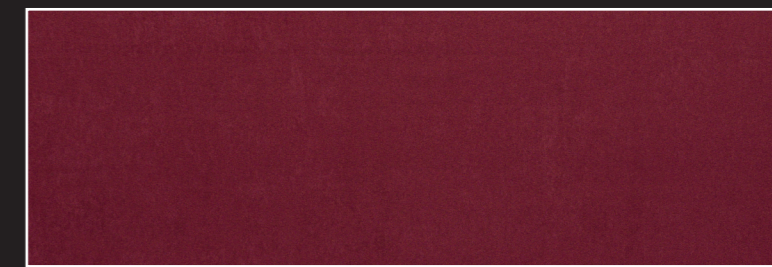
ART. HABANA COL. 01



ART. BOREA COL. 9180



ART. ZAFIRO COL. 9180



ART. HABANA COL. 22